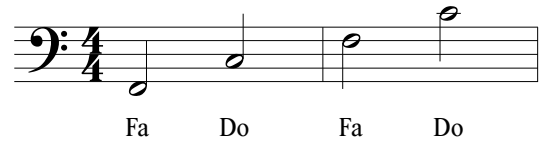


Apprendre à lire la clé de FA

Par Sibmol
lecahierdupianiste.com



Fa Do Fa Do

→ Il n'y a que des points de repère (Do ou Fa)

1



→ Les blanches sont des points de repère (Do ou Fa) et les noires des notes voisines

2

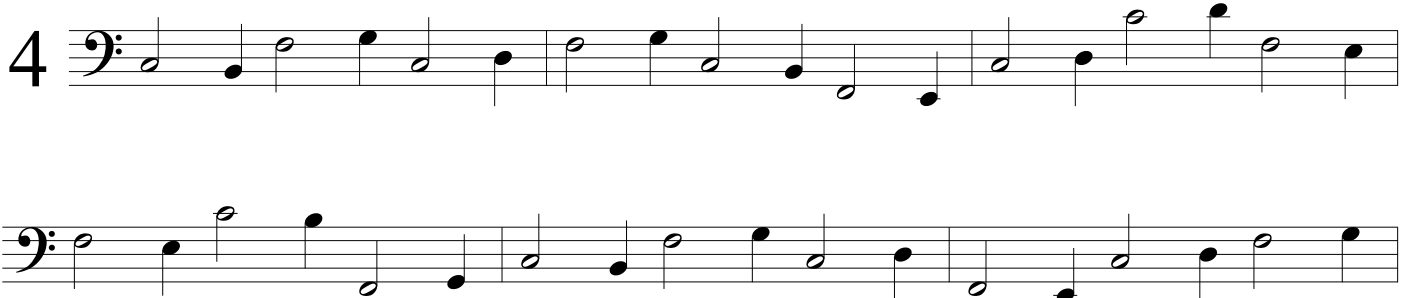


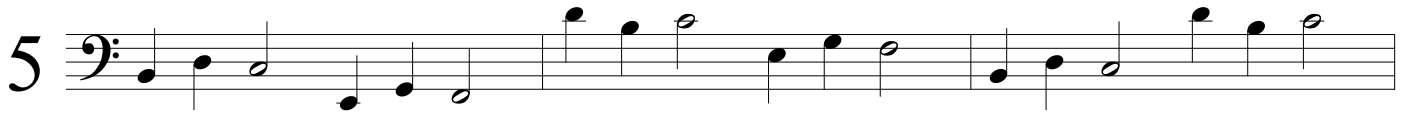
3



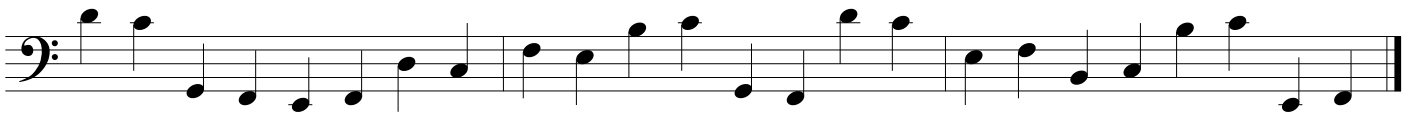
→ Il n'y a plus qu'un seul point de repère

4





→ Nous n'indiquons plus les points de repère



Les accords sont très importants dans le solfège. Il faut les apprendre le plus tôt possible. C'est notre nouvelle étape. Ils sont présents tout le temps de façon plus moins évidente.

Les accords ascendants :

DO-MI-SOL
RE-FA-LA
MI-SOL-SI
FA-LA-DO
SOL-SI-RE
LA-DO-MI
SI-RE-FA

Les accords descendants :

DO-LA-FA
SI-SOL-MI
LA-FA-RE
SOL-MI-DO
FA-RE-SI
MI-DO-LA
RE-SI-SOL



12



A musical staff in bass clef with a treble clef symbol (FA) to its left. It contains a sequence of 24 eighth notes: A1, G1, F1, E1, D1, C1, B0, A0, G0, F0, E0, D0, C0, B0, A0, G0, F0, E0, D0, C0, B0, A0, G0, F0.



A continuation of the musical staff from exercise 12, containing the final 8 notes: E0, D0, C0, B0, A0, G0, F0, and E0.

13



A musical staff in bass clef with a treble clef symbol (FA) to its left. It contains a sequence of 24 eighth notes: A1, G1, F1, E1, D1, C1, B0, A0, G0, F0, E0, D0, C0, B0, A0, G0, F0, E0, D0, C0, B0, A0, G0, F0.



A continuation of the musical staff from exercise 13, containing the final 8 notes: E0, D0, C0, B0, A0, G0, F0, and E0.

14



A musical staff in bass clef with a treble clef symbol (FA) to its left. It contains a sequence of 24 eighth notes: A1, G1, F1, E1, D1, C1, B0, A0, G0, F0, E0, D0, C0, B0, A0, G0, F0, E0, D0, C0, B0, A0, G0, F0.



A continuation of the musical staff from exercise 14, containing the final 8 notes: E0, D0, C0, B0, A0, G0, F0, and E0.

15



A musical staff in bass clef with a treble clef symbol (FA) to its left. It contains a sequence of 24 eighth notes: A1, G1, F1, E1, D1, C1, B0, A0, G0, F0, E0, D0, C0, B0, A0, G0, F0, E0, D0, C0, B0, A0, G0, F0.



A continuation of the musical staff from exercise 15, containing the final 8 notes: E0, D0, C0, B0, A0, G0, F0, and E0.

16  Musical staff 16, first line. Bass clef. The melody consists of quarter notes: G2, A2, B2, C3, D3, E3, F3, G3, A3, B3, C4, D4, E4, F4, G4, A4, B4, C5.

 Musical staff 16, second line. Bass clef. The melody consists of quarter notes: D4, E4, F4, G4, A4, B4, C5, B4, A4, G4, F4, E4, D4, C4, B3, A3, G3, F3, E3, D3, C3, B2, A2, G2.

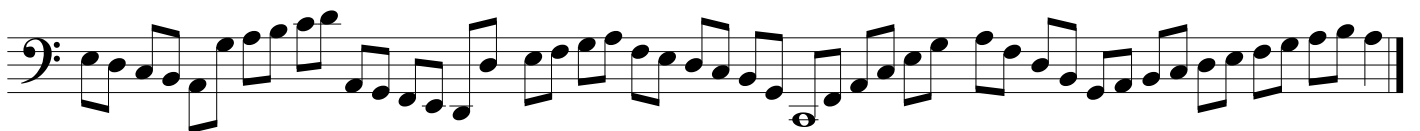
17  Musical staff 17, first line. Bass clef. The melody consists of eighth notes: G2, A2, B2, C3, D3, E3, F3, G3, A3, B3, C4, D4, E4, F4, G4, A4, B4, C5.

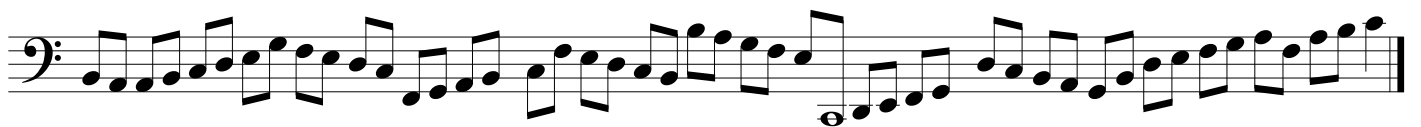
 Musical staff 17, second line. Bass clef. The melody consists of eighth notes: D4, E4, F4, G4, A4, B4, C5, B4, A4, G4, F4, E4, D4, C4, B3, A3, G3, F3, E3, D3, C3, B2, A2, G2.

18  Musical staff 18, first line. Bass clef. The melody consists of eighth notes: G2, A2, B2, C3, D3, E3, F3, G3, A3, B3, C4, D4, E4, F4, G4, A4, B4, C5.

 Musical staff 18, second line. Bass clef. The melody consists of eighth notes: D4, E4, F4, G4, A4, B4, C5, B4, A4, G4, F4, E4, D4, C4, B3, A3, G3, F3, E3, D3, C3, B2, A2, G2.

19  Musical staff 19, first line. Bass clef. The melody consists of eighth notes: G2, A2, B2, C3, D3, E3, F3, G3, A3, B3, C4, D4, E4, F4, G4, A4, B4, C5.

 Musical staff 19, second line. Bass clef. The melody consists of eighth notes: D4, E4, F4, G4, A4, B4, C5, B4, A4, G4, F4, E4, D4, C4, B3, A3, G3, F3, E3, D3, C3, B2, A2, G2.



24 