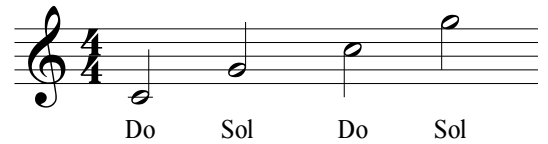


Apprendre à lire la clé de SOL

Par Sibmol
lecahierdupianiste.com



→ Il n'y a que des points de repère (Do ou Sol)



→ Les blanches sont des points de repère (Do ou Sol) et les noires des notes voisines

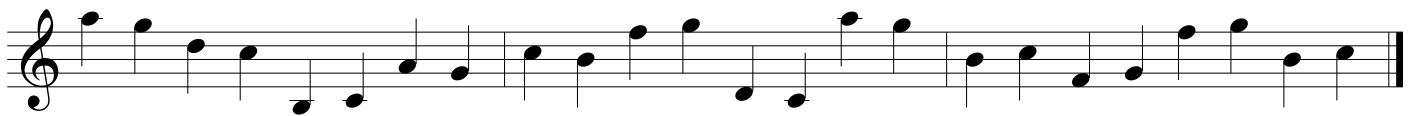
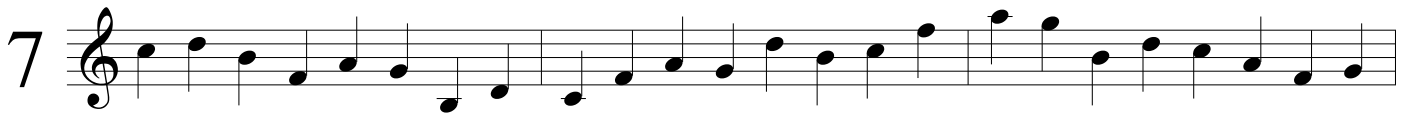


→ Il n'y a plus qu'un seul point de repère





→ Nous n'indiquons plus les points de repère



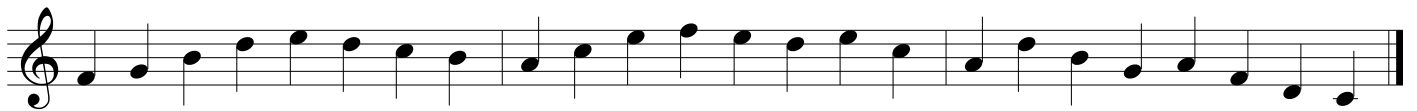
Les accords sont très importants dans le solfège. Il faut les apprendre le plus tôt possible. C'est notre nouvelle étape. Ils sont présents tout le temps de façon plus moins évidente.

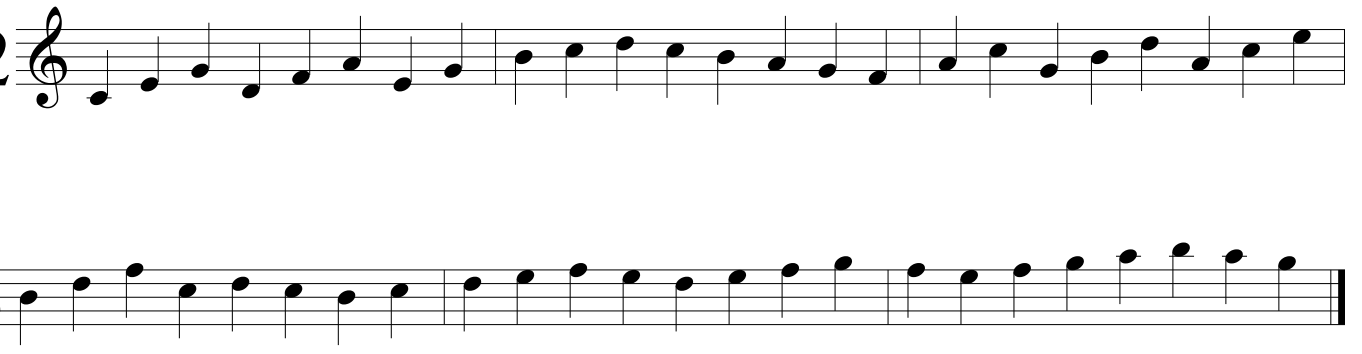
Les accords ascendants :

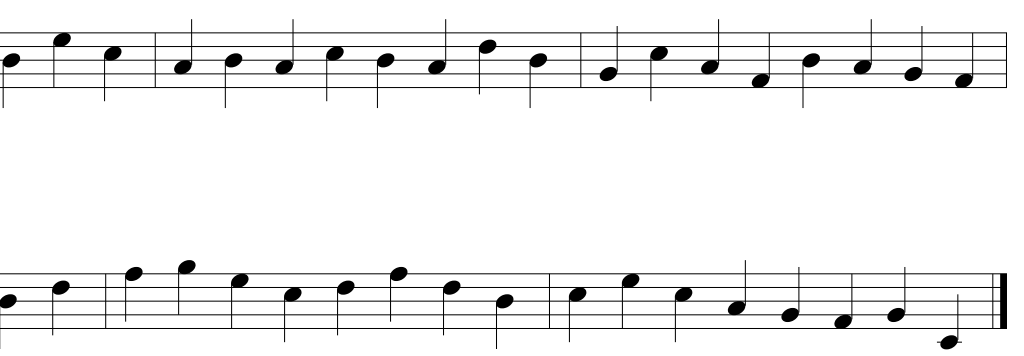
DO-MI-SOL
RE-FA-LA
MI-SOL-SI
FA-LA-DO
SOL-SI-RE
LA-DO-MI
SI-RE-FA

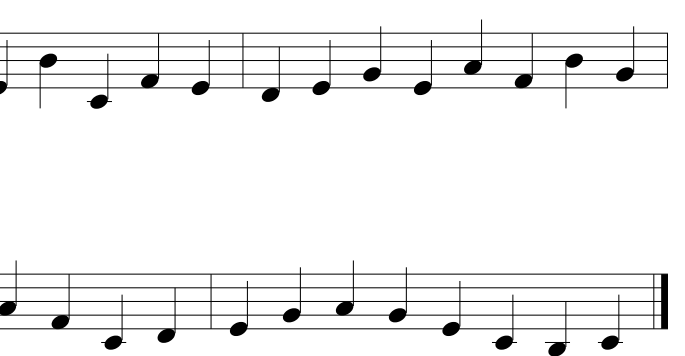
Les accords descendants :

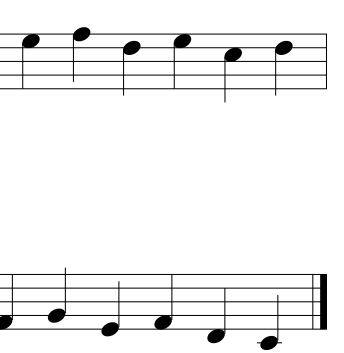
DO-LA-FA
SI-SOL-MI
LA-FA-RE
SOL-MI-DO
FA-RE-SI
MI-DO-LA
RE-SI-SOL



12  Musical exercise 12 consists of three measures of music in treble clef. The first measure contains a sequence of eighth notes starting from G4. The second measure contains a sequence of eighth notes starting from A4. The third measure contains a sequence of eighth notes starting from B4. The exercise concludes with a double bar line.

13  Musical exercise 13 consists of three measures of music in treble clef. The first measure contains a sequence of eighth notes starting from C5. The second measure contains a sequence of eighth notes starting from D5. The third measure contains a sequence of eighth notes starting from E5. The exercise concludes with a double bar line.

14  Musical exercise 14 consists of three measures of music in treble clef. The first measure contains a sequence of eighth notes starting from F5. The second measure contains a sequence of eighth notes starting from G5. The third measure contains a sequence of eighth notes starting from A5. The exercise concludes with a double bar line.

15  Musical exercise 15 consists of three measures of music in treble clef. The first measure contains a sequence of eighth notes starting from B5. The second measure contains a sequence of eighth notes starting from C6. The third measure contains a sequence of eighth notes starting from D6. The exercise concludes with a double bar line.

16  Musical staff 16, first line. Treble clef, G-clef. The melody starts on G4 and moves stepwise up to A5, then descends stepwise to G4.

 Musical staff 16, second line. Treble clef, G-clef. The melody continues from the first line, moving stepwise up to A5, then descends stepwise to G4.

17  Musical staff 17, first line. Treble clef, G-clef. The melody starts on G4 and moves stepwise up to A5, then descends stepwise to G4.

 Musical staff 17, second line. Treble clef, G-clef. The melody continues from the first line, moving stepwise up to A5, then descends stepwise to G4.

18  Musical staff 18, first line. Treble clef, G-clef. The melody starts on G4 and moves stepwise up to A5, then descends stepwise to G4.

 Musical staff 18, second line. Treble clef, G-clef. The melody continues from the first line, moving stepwise up to A5, then descends stepwise to G4.

19  Musical staff 19, first line. Treble clef, G-clef. The melody starts on G4 and moves stepwise up to A5, then descends stepwise to G4.

 Musical staff 19, second line. Treble clef, G-clef. The melody continues from the first line, moving stepwise up to A5, then descends stepwise to G4.

