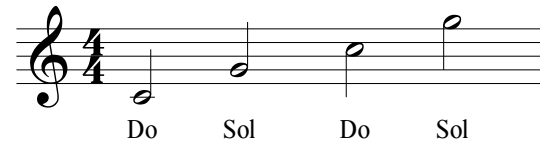


Apprendre à lire la clé de SOL

Par Sibmol
lecahierdupianiste.com



→ Il n'y a que des points de repère (Do ou Sol)



→ Les blanches sont des points de repère (Do ou Sol) et les noires des notes voisines

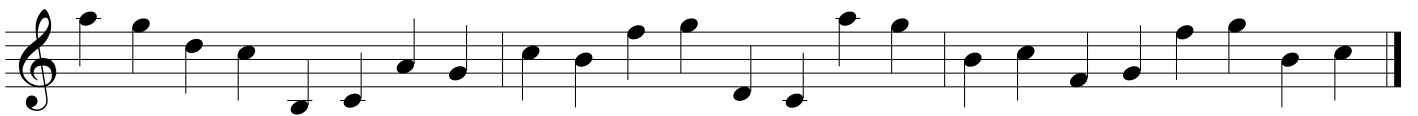
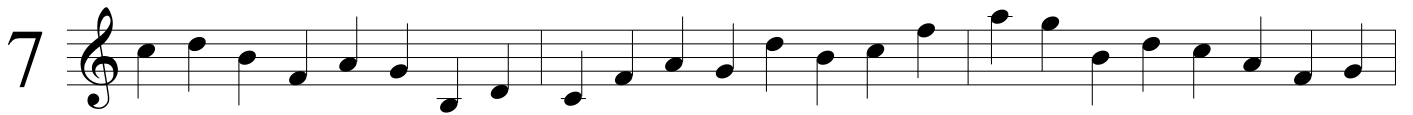
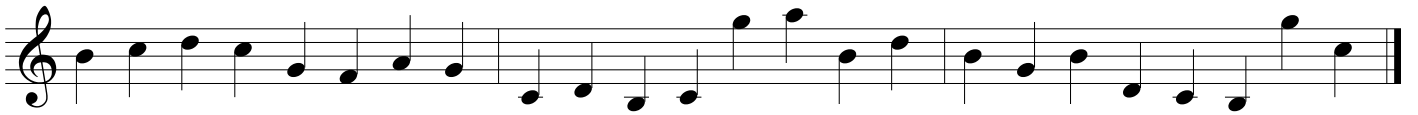


→ Il n'y a plus qu'un seul point de repère





→ Nous n'indiquons plus les points de repère



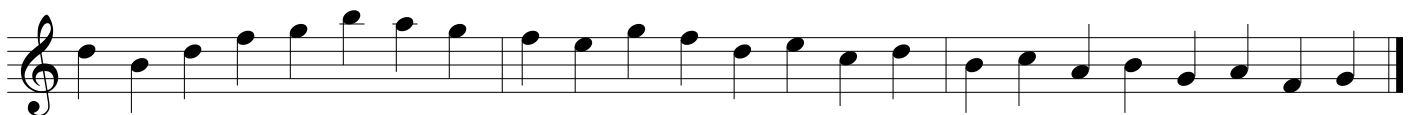
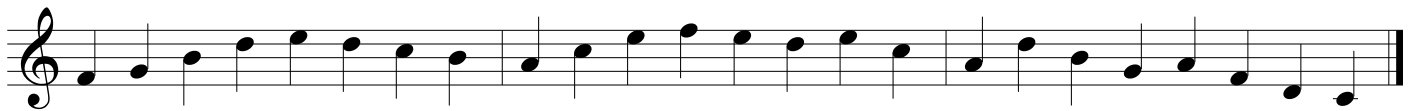
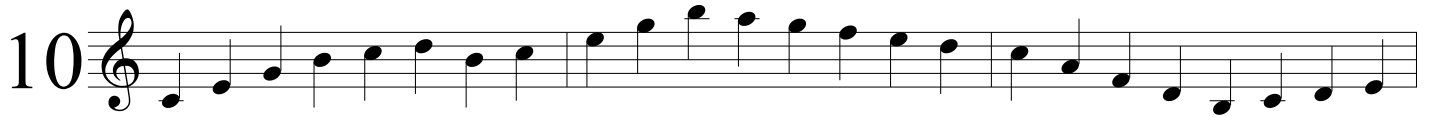
Les accords sont très importants dans le solfège. Il faut les apprendre le plus tôt possible.
C'est notre nouvelle étape. Ils sont présents tout le temps de façon plus moins évidente.

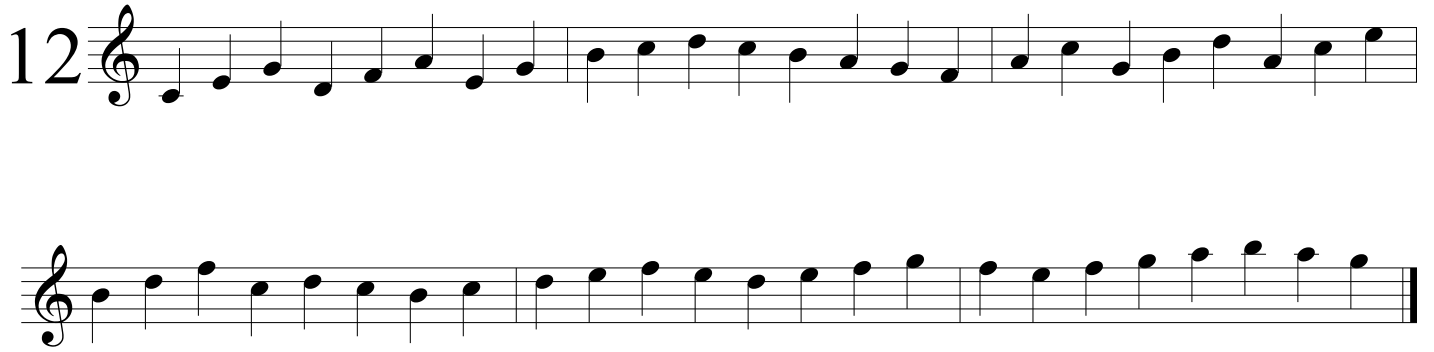
Les accords ascendants :

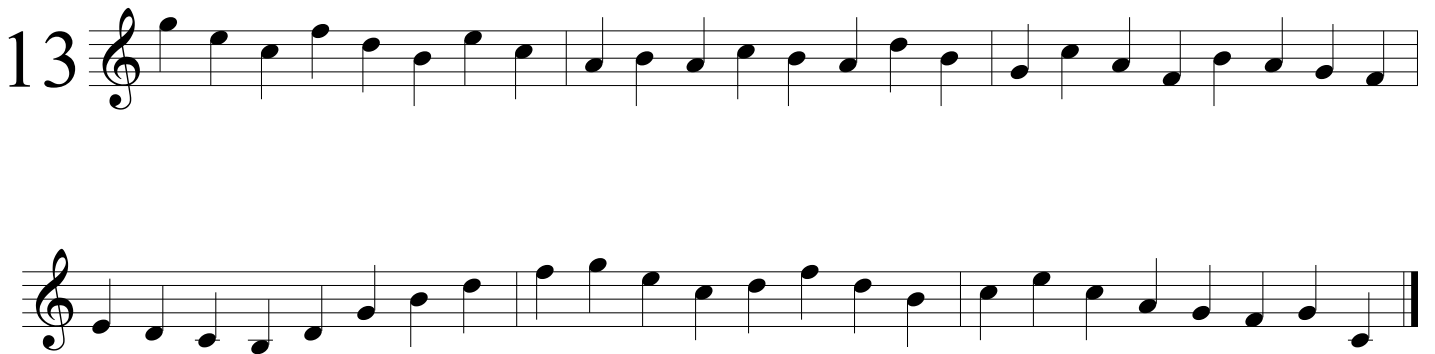
DO-MI-SOL
RE-FA-LA
MI-SOL-SI
FA-LA-DO
SOL-SI-RE
LA-DO-MI
SI-RE-FA

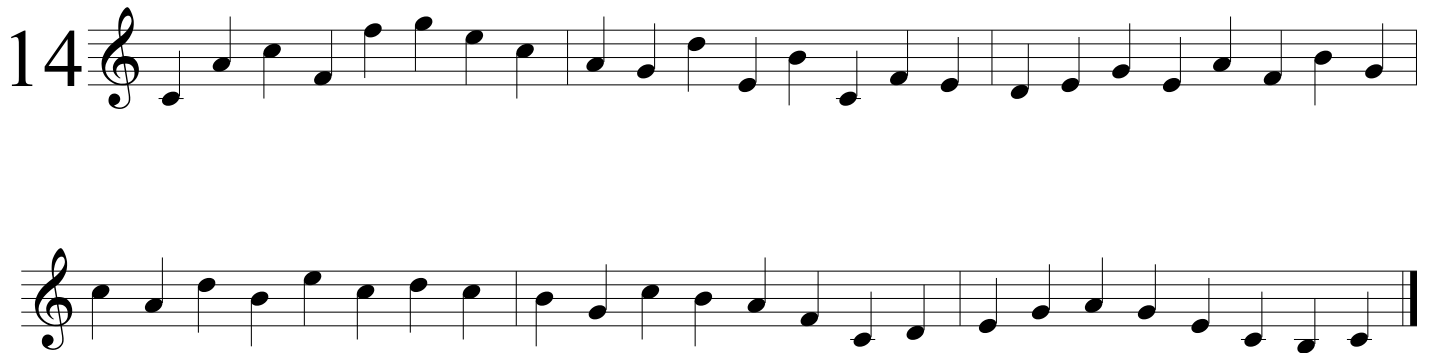
Les accords descendants :

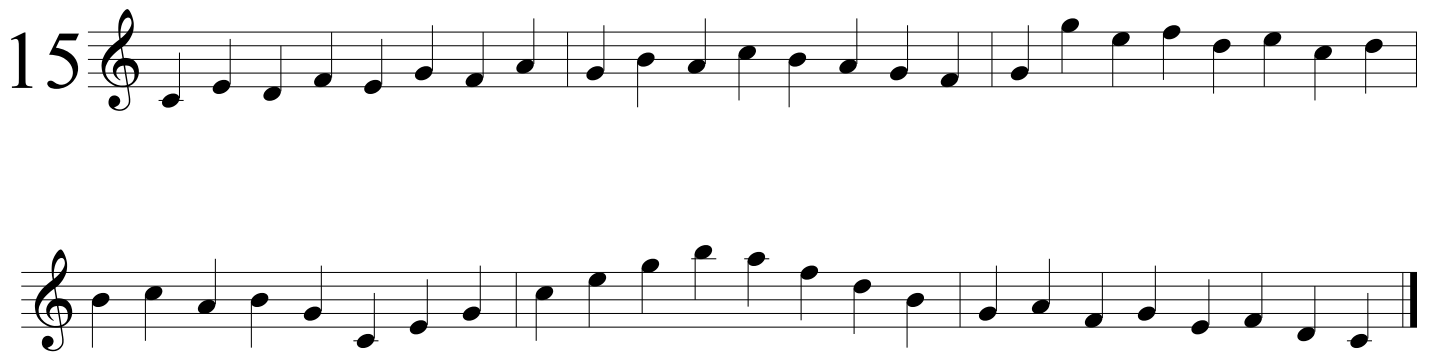
DO-LA-FA
SI-SOL-MI
LA-FA-RE
SOL-MI-DO
FA-RE-SI
MI-DO-LA
RE-SI-SOL



12  Exercise 12 consists of two staves of music. The first staff begins with a treble clef and a common time signature. It contains three measures of music: the first measure has four eighth notes (G4, A4, B4, C5), the second has four eighth notes (D5, E5, F5, G5), and the third has four eighth notes (G5, F5, E5, D5). The second staff continues with three measures: the first has four eighth notes (C5, B4, A4, G4), the second has four eighth notes (F4, E4, D4, C4), and the third has four eighth notes (B3, A3, G3, F3), ending with a double bar line.

13  Exercise 13 consists of two staves of music. The first staff begins with a treble clef and a common time signature. It contains three measures of music: the first has four eighth notes (C5, D5, E5, F5), the second has four eighth notes (G5, A5, B5, C6), and the third has four eighth notes (B5, A5, G5, F5). The second staff continues with three measures: the first has four eighth notes (E5, D5, C5, B4), the second has four eighth notes (A4, G4, F4, E4), and the third has four eighth notes (D4, C4, B3, A3), ending with a double bar line.

14  Exercise 14 consists of two staves of music. The first staff begins with a treble clef and a common time signature. It contains three measures of music: the first has four eighth notes (C5, D5, E5, F5), the second has four eighth notes (G5, A5, B5, C6), and the third has four eighth notes (B5, A5, G5, F5). The second staff continues with three measures: the first has four eighth notes (E5, D5, C5, B4), the second has four eighth notes (A4, G4, F4, E4), and the third has four eighth notes (D4, C4, B3, A3), ending with a double bar line.

15  Exercise 15 consists of two staves of music. The first staff begins with a treble clef and a common time signature. It contains three measures of music: the first has four eighth notes (C5, D5, E5, F5), the second has four eighth notes (G5, A5, B5, C6), and the third has four eighth notes (B5, A5, G5, F5). The second staff continues with three measures: the first has four eighth notes (E5, D5, C5, B4), the second has four eighth notes (A4, G4, F4, E4), and the third has four eighth notes (D4, C4, B3, A3), ending with a double bar line.



