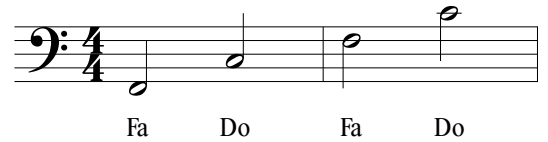
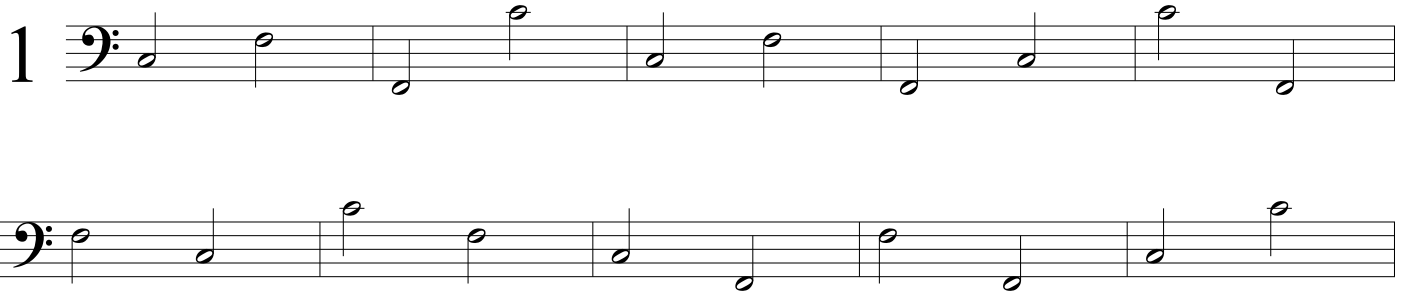


Apprendre à lire la clé de FA

Par Sibmol
lecahierdupianiste.com



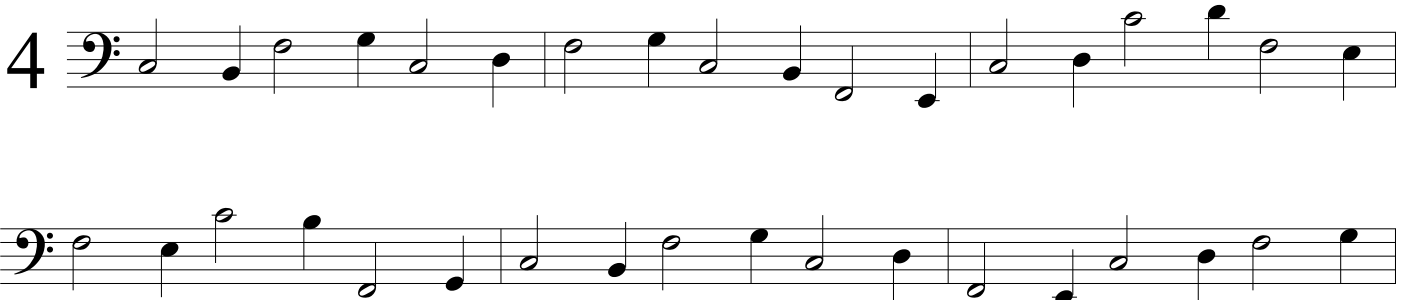
→ Il n'y a que des points de repère (Do ou Fa)



→ Les blanches sont des points de repère (Do ou Fa) et les noires des notes voisines



→ Il n'y a plus qu'un seul point de repère



5

Les accords sont très importants dans le solfège. Il faut les apprendre le plus tôt possible.
C'est notre nouvelle étape. Ils sont présents tout le temps de façon plus moins évidente.

Les accords ascendants :

DO-MI-SOL
RE-FA-LA
MI-SOL-SI
FA-LA-DO
SOL-SI-RE
LA-DO-MI
SI-RE-FA

Les accords descendants :

DO-LA-FA
SI-SOL-MI
LA-FA-RE
SOL-MI-DO
FA-RE-SI
MI-DO-LA
RE-SI-SOL





16  Musical staff 16, first line. Bass clef, 16 measures of music. The notes are: G2, A2, B2, C3, D3, E3, F3, G3, A3, B3, C4, D4, E4, F4, G4, A4.

 Musical staff 16, second line. Bass clef, 16 measures of music. The notes are: B3, C4, D4, E4, F4, G4, A4, B4, C5, B4, A4, G4, F4, E4, D4, C4.

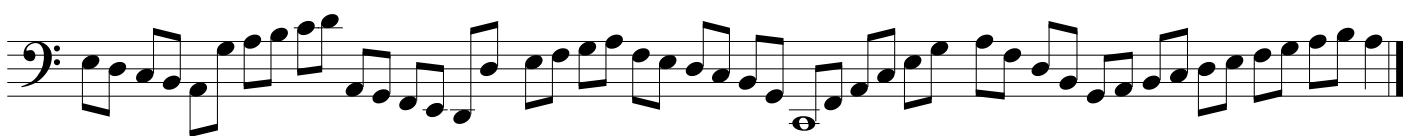
17  Musical staff 17, first line. Bass clef, 16 measures of music. The notes are: G3, A3, B3, C4, D4, E4, F4, G4, A4, B4, C5, B4, A4, G4, F4, E4.

 Musical staff 17, second line. Bass clef, 16 measures of music. The notes are: D4, E4, F4, G4, A4, B4, C5, B4, A4, G4, F4, E4, D4, C4, B3, A3.

18  Musical staff 18, first line. Bass clef, 16 measures of music. The notes are: G3, A3, B3, C4, D4, E4, F4, G4, A4, B4, C5, B4, A4, G4, F4, E4.

 Musical staff 18, second line. Bass clef, 16 measures of music. The notes are: D4, E4, F4, G4, A4, B4, C5, B4, A4, G4, F4, E4, D4, C4, B3, A3.

19  Musical staff 19, first line. Bass clef, 16 measures of music. The notes are: G3, A3, B3, C4, D4, E4, F4, G4, A4, B4, C5, B4, A4, G4, F4, E4.

 Musical staff 19, second line. Bass clef, 16 measures of music. The notes are: D4, E4, F4, G4, A4, B4, C5, B4, A4, G4, F4, E4, D4, C4, B3, A3.

